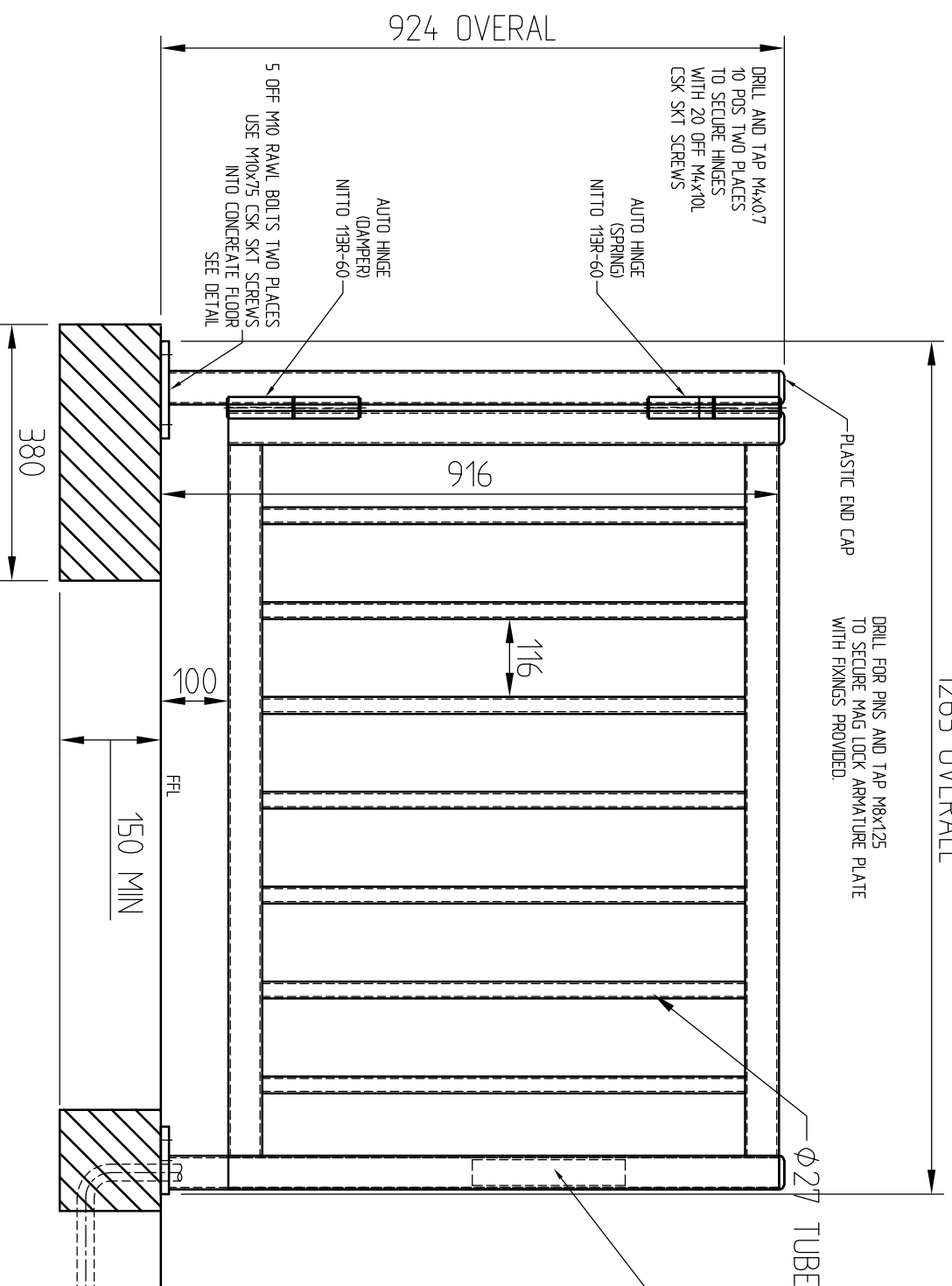
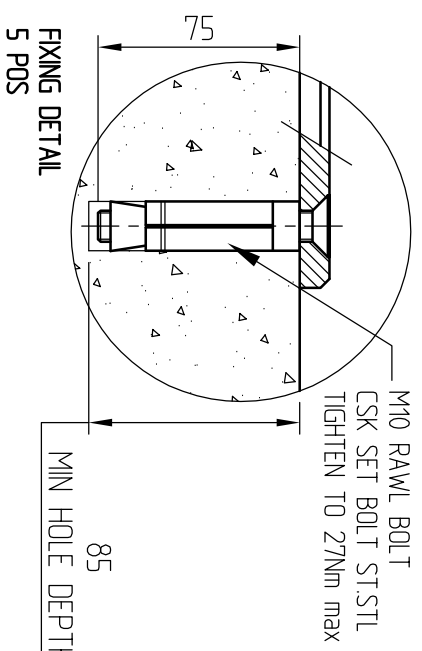
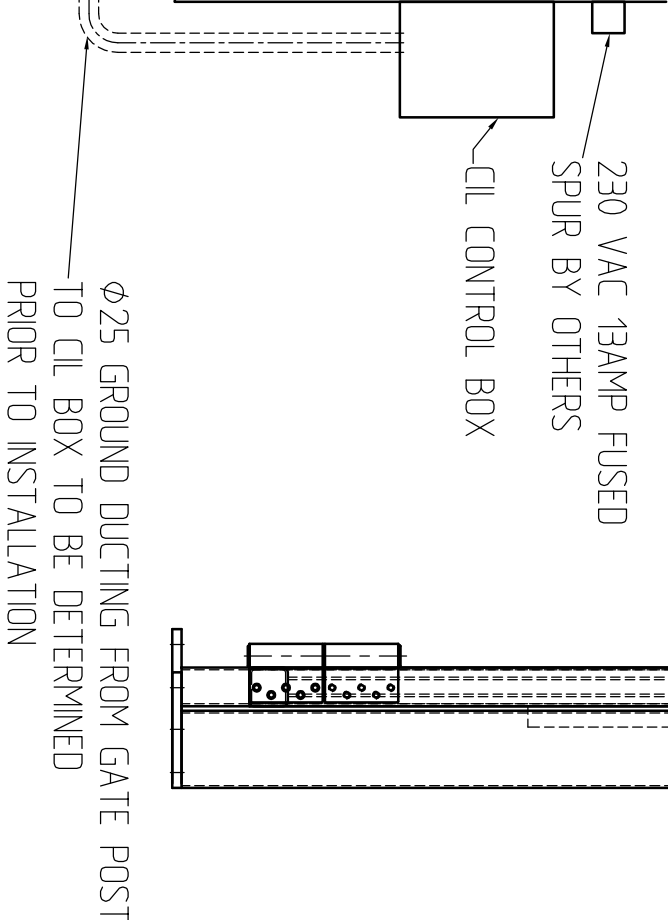


1265 OVERALL



DRILL AND TAP M5x0.8  
4 POS  
TO SECURE MAG LOCK  
WITH 4 OFF M5x10L CSK SKT SCREWS

ELECTRO MAGNET MOUNTED IN POST  
600 lbs HOLDING FORCE  
12 or 24v DC  
C.D.V M300



CLARKE INSTRUMENTS LTD  
RESERVES THE RIGHT TO  
CHANGE DETAILS  
WITHOUT PRIOR NOTICE.

ISSUE	DATE	CHANGE NOTE	CHECKED	CERTD.	SCALE
A	29.01.04	-			N.T'S
DRAWN	MAKEADY				

PROTECTIVE FINISH  
POLISHED OR POWDER COAT

TOLERANCES FOR DIMENSIONS

DIMS. SHOWN THUS >449 ±1

DIMS. SHOWN THUS 1 ±0.4

DIMS. SHOWN THUS 10 ±0.15

DIMS. SHOWN THUS 100 ±0.05

UNLESS OTHERWISE STATED

ALL DIMENSIONS IN MILLIMETRES

MATERIAL  
ST. STL OR MILD STEEL

TITLE  
INTERNAL SINGLE DIRECTION SWING GATE  
WITH ELECTRO-MAGNET SLAM POST LOCK

Clark Instruments Ltd.

DRG.No. 185-200