

DRG.No. 480B-200

USED ON

CLARKE INSTRUMENTS LTD RESERVES THE RIGHT TO CHANGE DETAILS WITHOUT PRIOR NOTICE.

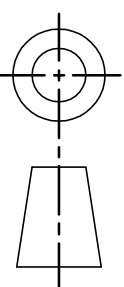
1775 [5'-10"]

PLINTH

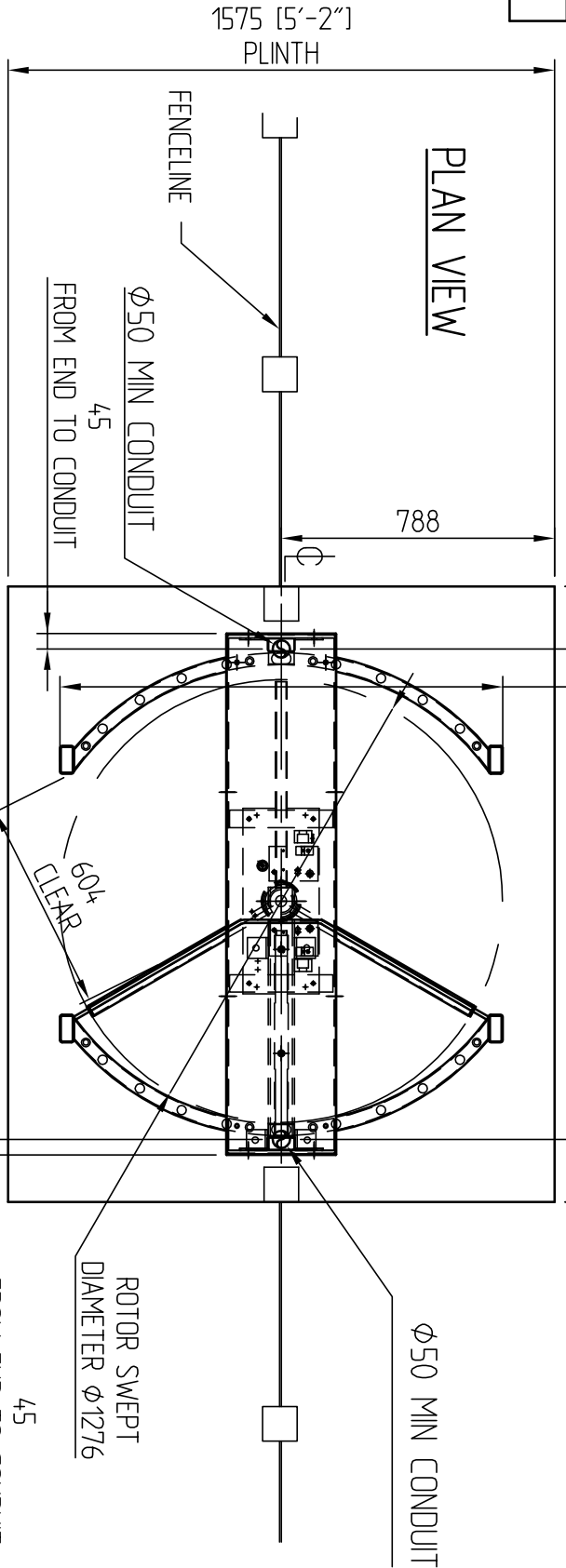
(180)

(180)

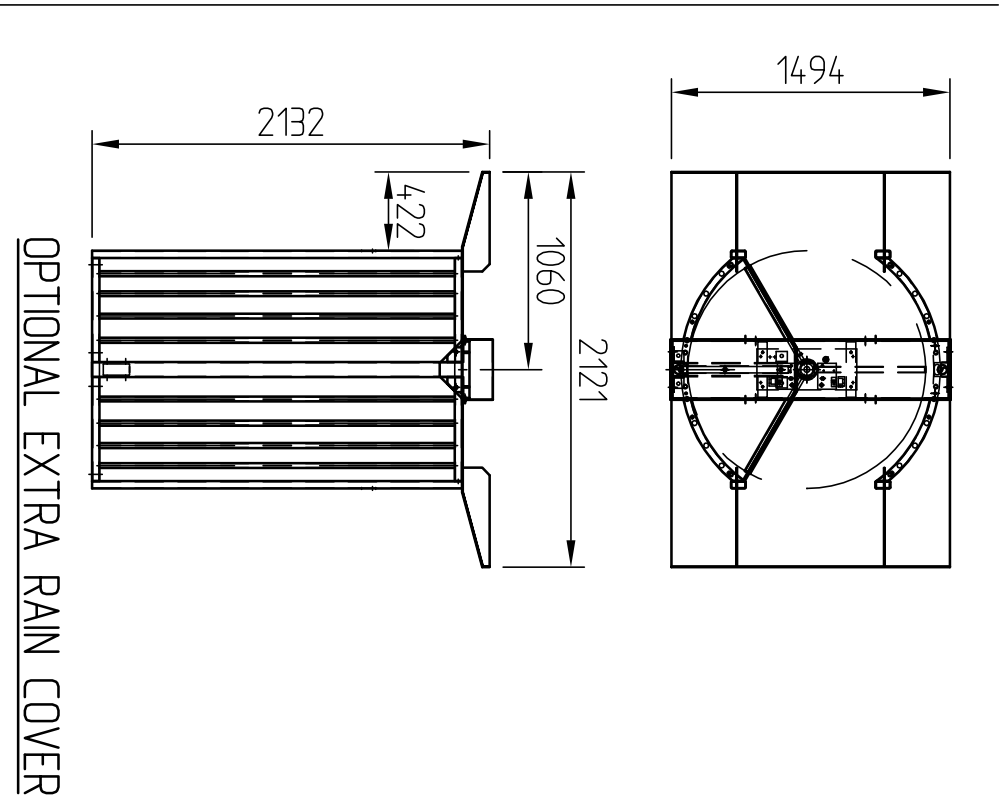
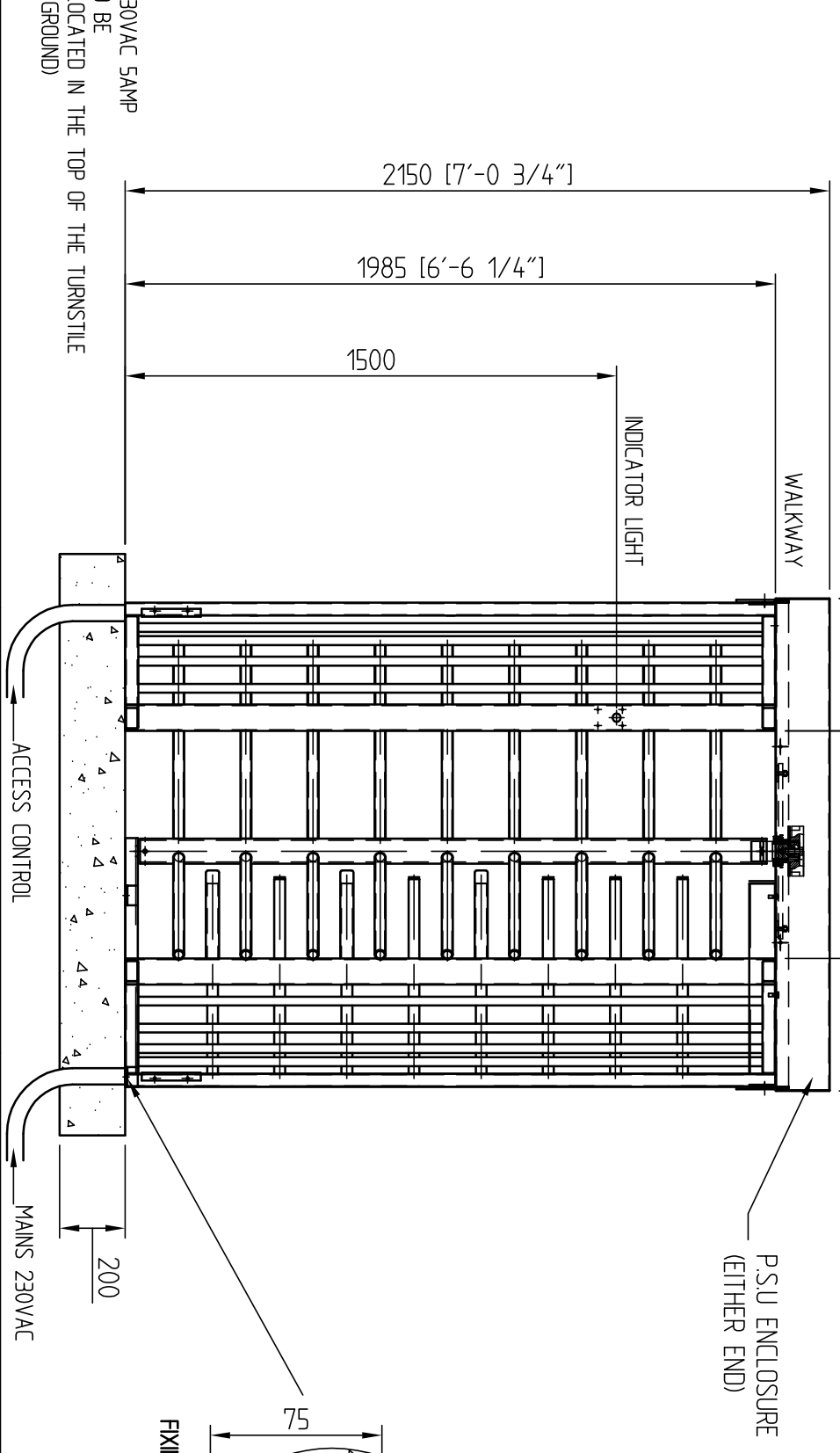
DRAWN TO B.S. 8888



THIRD ANGLE PROJECTION



ELEVATION



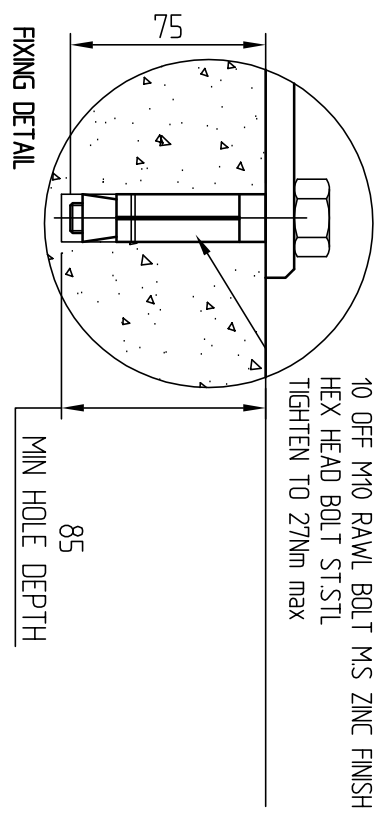
NOTE:
 TURNSTILE SUPPLY VOLTAGE 230VAC 5AMP
 (MANS SUPPLY CONNECTION TO BE
 TERMINATED IN THE 'DC PSU' LOCATED IN THE TOP OF THE TURNSTILE
 ALLOW 35M OF CABLE ABOVE GROUND)

ISSUE	DATE	CHECKED	CERTO.	SCALE	N.T.S
B	09-12-09	OPTIONAL RAIN COVER ADDED			
A	03-03-08	INITIAL ISSUE			
ISSUE	DATE	CHANGE NOTE			
DRAWN	JHARRIS	CHECKED			

PROTECTIVE FINISH
 PRE-GALVANISED AND POWDER COATED RAL 9011
 TOLERANCES FOR DIMENSIONS
 DIMS. SHOWN THUS >449 ±1
 DIMS. SHOWN THUS 1 ±0.4
 DIMS. SHOWN THUS 10 ±0.15
 DIMS. SHOWN THUS 100 ±0.05
 UNLESS OTHERWISE STATED
 ALL DIMENSIONS IN MILLIMETRES

MATERIAL
 STORES REF. -
 TITLE
 480B TURNSTILE WITH WALKWAY GUIDE
 (STRAIGHT BAR)

Clarke Instruments Ltd.
 DRG.No. 480B-200
 A3



10 OFF M10 RAWL BOLT MS ZINC FINISH
 HEX HEAD BOLT ST.STL
 TIGHTEN TO 27Nm max