

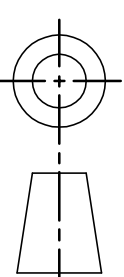
DRG.No. 481-200

USED ON

CLARKE INSTRUMENTS LIMITED
RESERVE THE RIGHT TO MODIFY
THE DESIGN WITHOUT NOTICE

2670

DRAWN TO B.S. 8888



THIRD ANGLE PROJECTION

METHOD OF OPERATION

THE TURNSTILE AND GATE ARE BI-DIRECTIONAL ONCE THE USER HAS AUTHORISED BY EITHER AN ACCESS CONTROL SYSTEM OR PUSH BUTTON CONTROL FROM A REMOTE LOCATION THE TURNSTILE WILL UNLOCK ENABLING THE USER TO ADVANCE THROUGH THE TURNSTILE. ADDITIONALLY IF REQUIRED THE USER HAS THE OPTION OF AUTOMATICALLY UNLOCKING THE GATE AND MOTORISING TO THE OPEN POSITION BY PUSHING A PUSH BUTTON LOCATED ON EITHER SIDE OF THE TURNSTILE FRAME WHICH IS ONLY ACTIVE IF USER HAS BEEN CLEARED TO PASS THROUGH THE TURNSTILE.

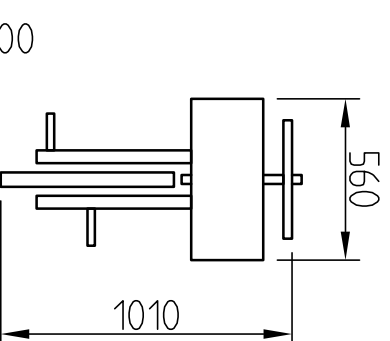
THE DISMOUNTED CYCLIST WOULD PASS THROUGH THE TURNSTILE PUSHING THE CYCLE THROUGH THE OPENED GATE. ONCE THE TURNSTILE ROTOR HAS COMPLETED ITS ROTATION IT WILL AUTOMATICALLY LOCK. THE GATE WILL REMAIN OPEN FOR A LONGER DURATION TO ALLOW THE CYCLE TO CLEAR THE GATE AND PHOTO CELLS. (ADJUSTABLE OPEN TIME).

THE GATE WILL AUTOMATICALLY (MECHANICALLY) CLOSE AND RELOCK AFTER THE PRE-SET TIME HAS ELAPSED.

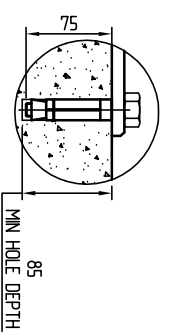
IN THE CLOSED POSITION THE TURNSTILE AND GATE ARE ELECTRICALLY LOCKED.

BOTH THE TURNSTILE AND GATE FAIL UNLOCKED IN THE EVENT OF POWER FAILURE (FAIL LOCKED OPTION AVAILABLE).

TYPICAL CYCLE PROFILE



M10 RAWL BOLT
HEX HEAD BOLT STILT
TIGHTEN TO 27Nm max

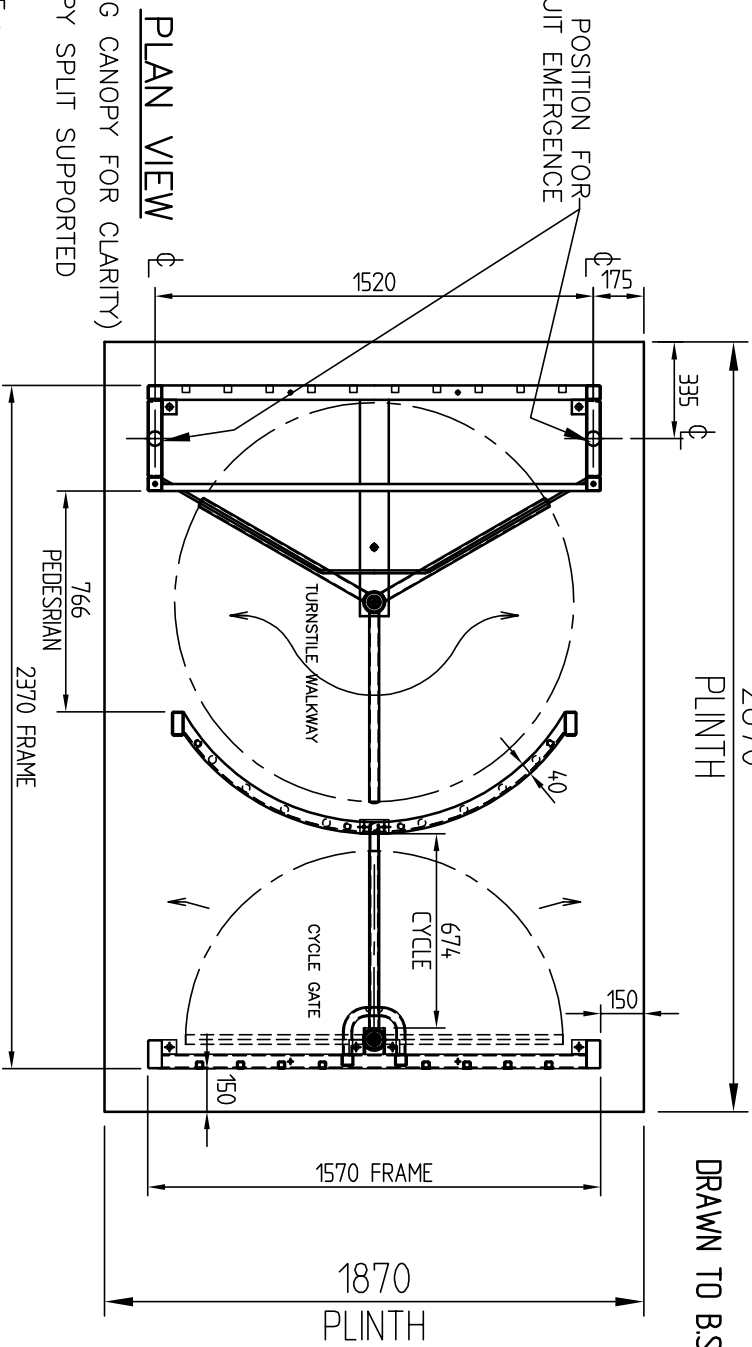


THE CUSTOMER TO ENSURE A SUITABLE STRUCTURED OPENING FOR MOUNTING, WITH FREE STANDING STRONG POINT BY MEANS OF THE NORMAL ANCHORAGE SPECIFIED BY THE MANUFACTURE.

FIXING DETAIL

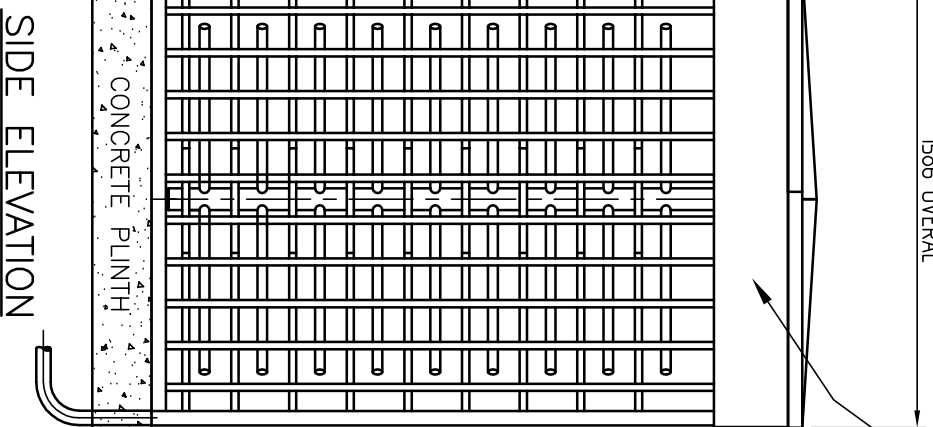
1586 OVERAL

NOTE :-
NORMALLY THE POWER SUPPLY UNIT AND CONTROL BOARD ENCLOSURE ARE CONTAINED WITHIN THE CANOPY. CABLES TO THIS AREA (MAINS SWA AND SIGNAL CABLES) ARE DUCTED THROUGH VERTICAL SECTIONS OF THE TURNSTILE.

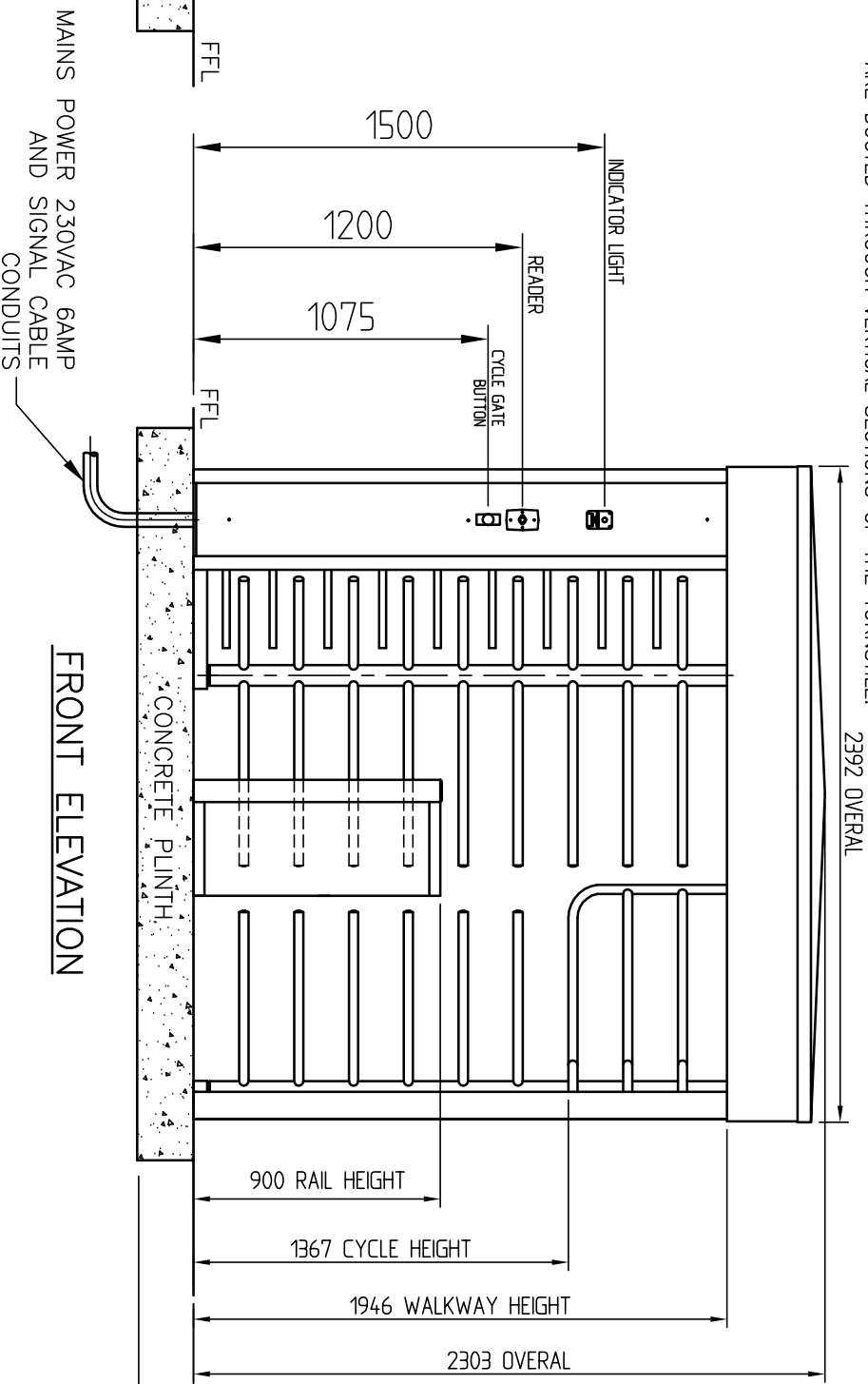


PLAN VIEW

(OMITTING CANOPY FOR CLARITY)
CANOPY SPLIT SUPPORTED



FRONT ELEVATION



PROTECTIVE FINISH

TOLERANCES FOR DIMENSIONS

DIMS. SHOWN THUS	>449	±1
DIMS. SHOWN THUS	1	±0.4
DIMS. SHOWN THUS	10	±0.15
DIMS. SHOWN THUS	100	±0.05
UNLESS OTHERWISE STATED		
ALL DIMENSIONS IN MILLIMETRES		

MATERIAL

STORES REF.

TITLE

COMBINED PEDESTRIAN AND CYCLE ENTRANCE

PLINTH DETAILS

Clarke Instruments Ltd.

DRG.No.

481-200

A3

DRAWN	MKEYADY	CHECKED	CERTO.	SCALE	N.T.S.
ISSUE	DATE	CHANGE NOTE			
A	31.01.08	INITIAL ISSUE			
B	14-03-08	PROD ISSUE			
C	30-10-09	GATE CHANGED TO NEW DESIGN			