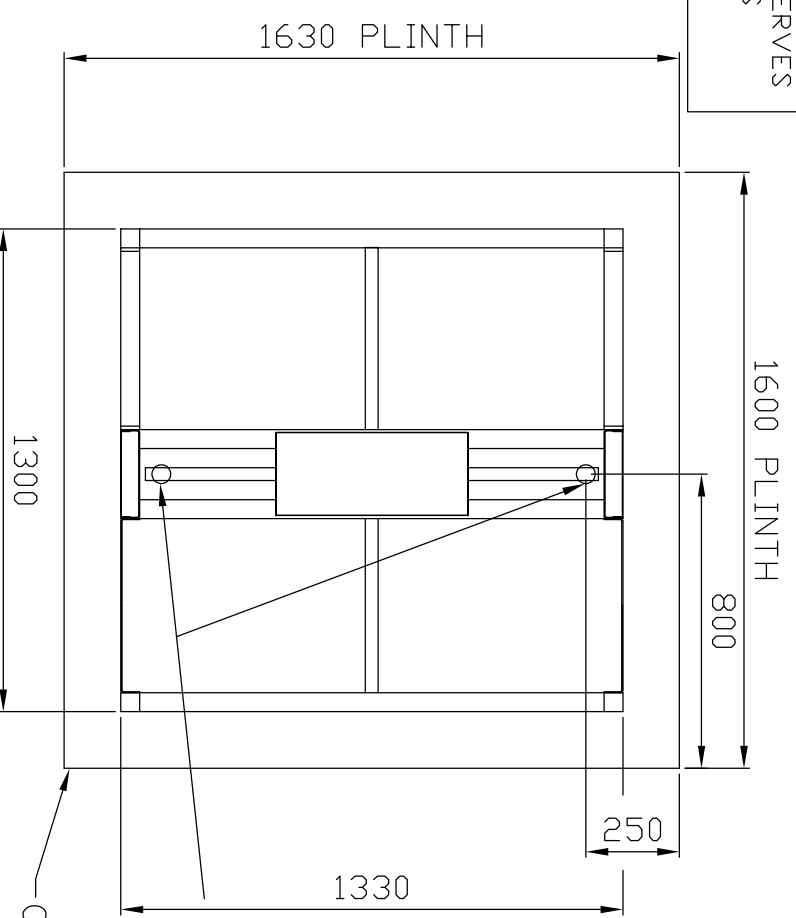


DRG No:
491C-202

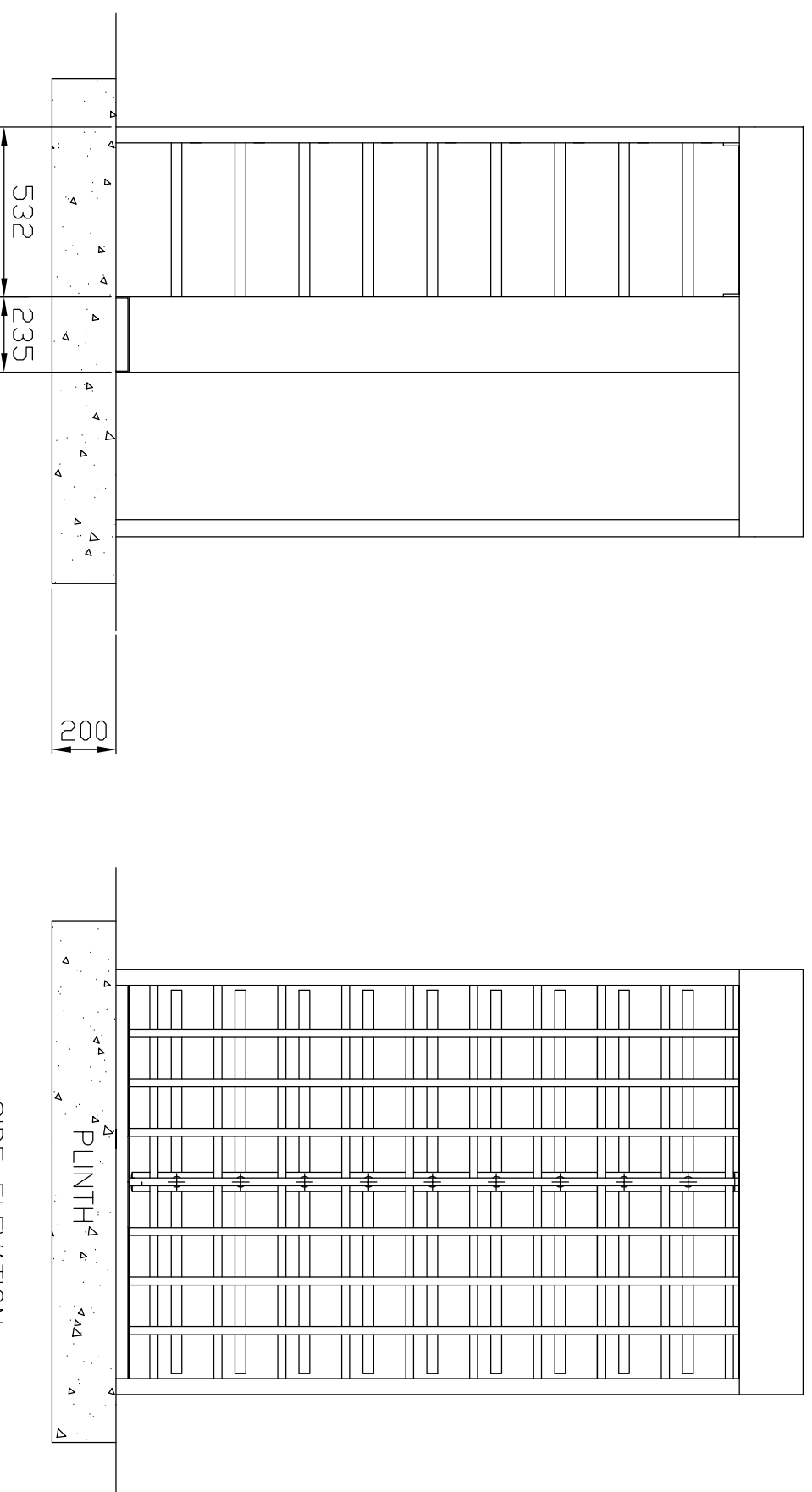
CLARKE INSTRUMENTS Ltd RESERVES
THE RIGHT TO CHANGE DETAILS
WITHOUT PRIOR NOTICE.

PLAN VIEW
(OMITTING CANOPY FOR CLARITY)



APPROX. POSITION FOR
Ø50 DUCT EMERGENCE

NOTE :-
NORMALLY THE POWER SUPPLY UNIT AND CONTROL BOARD
ENCLOSURE ARE CONTAINED WITHIN THE CANOPY.
CABLES TO THIS AREA (MAINS SWA AND SIGNAL CABLES)
ARE DUCTED THROUGH VERTICAL SECTIONS OF THE TURNSTILE.



SIDE ELEVATION

MATERIAL: MILD STEEL FINISH: POWDER COATED

CLARKE INSTRUMENTS Ltd

ALL DIMENSIONS ARE IN mm,
DO NOT SCALE

SALES ILLUSTRATION
491 'SARUM' FULL HEIGHT
TURNSTILE (90° BARS)

DRG No:

491C-202

A 12.11.01

-

ISS DATE CHANGE NOTE No.

DRAWN SIJ