

CLARKE INSTRUMENTS LTD

At the heart of innovative security solutions for the control of access since 1969

Electric Releases

Type 906 Rim Latch

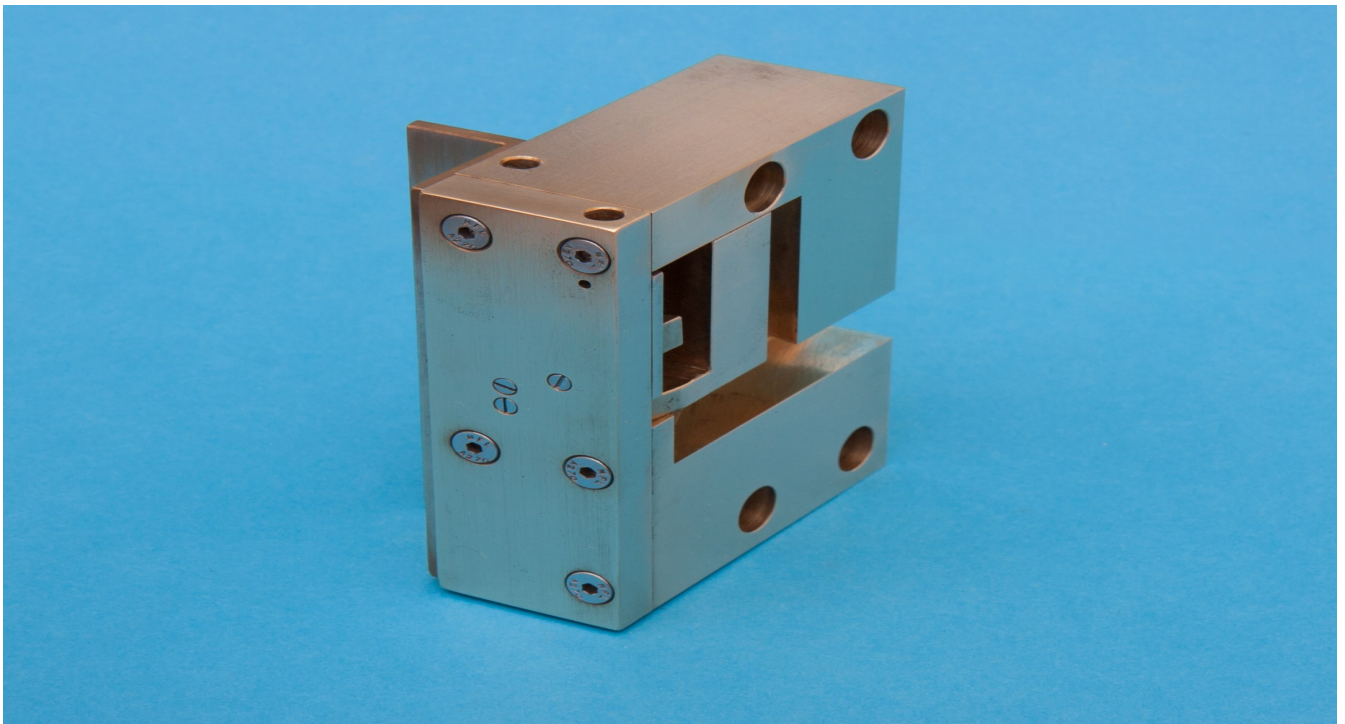
Suitable for the control of access on outward opening external doors

Specification

- ◆ 12VDC 25% fail locked
- ◆ Current consumption 0.5A
- ◆ Precision machined from solid brass
- ◆ Locking plunger - 8mm diameter stainless steel
- ◆ Withstands up to 10KN
- ◆ Suits wood frames

Optional Extras

- ◆ 24VDC (0.3A at 100%)
- ◆ Fail open on power failure
- ◆ Micro switch sensing
- ◆ Compatible with Rim lock Ingersoll SC71



Designed and manufactured in the UK by Clarke Instruments Ltd

CLARKE INSTRUMENTS LIMITED.

Distloc House, Old Sarum Airfield,
The Portway, Salisbury, Wiltshire, SP4 6DZ
Web: www.clarke-inst.com.
Email: sales@clarke-inst.com



C.I.L. Products comply with
EMC Directives of EEC
Certificate Number FM 12702
BS EN ISO9001:2008

