

CLARKE INSTRUMENTS LTD

At the heart of innovative security solutions for the control of access since 1969

Electric Releases

Type 942

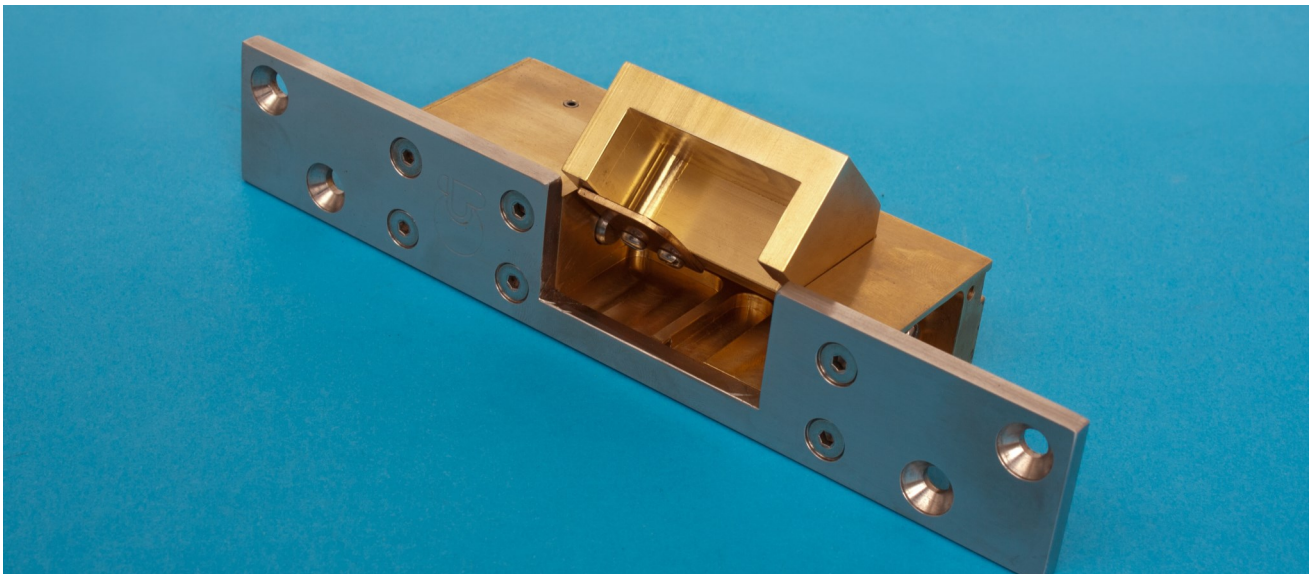
Offers a higher level of physical security using Chubb 3G110 deadlock or similar. Also suitable for door interlocking via the micro switch.

Specification

- ◆ 12VDC 100% fail locked
- ◆ Current consumption 0.308A
- ◆ Precision machined from solid brass
- ◆ 5mm thick stainless steel faceplate zinc black passivate
- ◆ Locking plunger - 8mm diameter stainless steel
- ◆ Withstands up to 9.8KN
- ◆ Suits deadbolt dimensions Height 38mm, Width 11-15mm, Throw 13-18mm (depending on door gap)

Optional Extras

- ◆ 24VDC
- ◆ Fail open on power failure
- ◆ Micro switch sensing for bolt status



Designed and manufactured in the UK by Clarke Instruments Ltd

CLARKE INSTRUMENTS LIMITED.

Distloc House, Old Sarum Airfield,
The Portway, Salisbury, Wiltshire, SP4 6DZ
Web: www.clarke-inst.com.
Email: sales@clarke-inst.com



C.I.L. Products comply with
EMC Directives of EEC
Certificate Number FM 12702
BS EN ISO9001:2008

