

# CLARKE INSTRUMENTS LTD

At the heart of innovative security solutions for the control of access since 1969

## Electric Releases

### Type 984

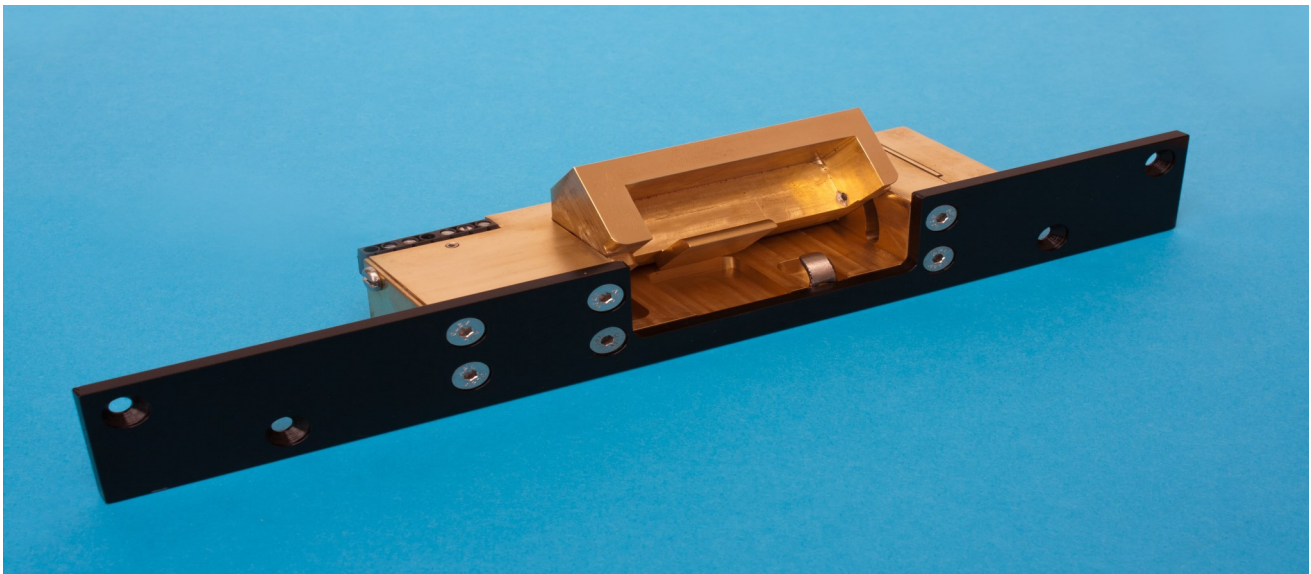
Suitable for high security environments including prisons, custody suites and detention centres using Chubb 3G112 deadlock or similar. Also suitable for door interlocking via the micro switch.

#### Specification

- ◆ 12VDC 25% fail locked
- ◆ Current consumption 1.2A
- ◆ Precision machined from solid brass
- ◆ 4.8mm thick stainless steel faceplate zinc black passivate
- ◆ Locking plunger - 8mm diameter stainless steel
- ◆ Withstands up to 19KN
- ◆ Suits deadbolt dimensions Height 65mm, Width 18mm, Throw 18-21mm (depending on door gap)

#### Optional Extras

- ◆ 24VDC
- ◆ Fail open on power failure
- ◆ Micro switch sensing for bolt status
- ◆ Micro switch sensing for solenoid status



Designed and manufactured in the UK by Clarke Instruments Ltd

#### **CLARKE INSTRUMENTS LIMITED.**

Distloc House, Old Sarum Airfield,  
The Portway, Salisbury, Wiltshire, SP4 6DZ  
Web: [www.clarke-inst.com](http://www.clarke-inst.com).  
Email: [sales@clarke-inst.com](mailto:sales@clarke-inst.com)



C.I.L. Products comply with  
EMC Directives of EEC  
Certificate Number FM 12702  
BS EN ISO9001:2008

